



*The Gospel
according to
Superheroes*

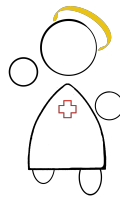
Book Discussion Group

Here are some questions to help get you started with your discussion.

The Lion, the Witch and the Wardrobe Chapter 15:

- ❖ Why does Lewis note that Susan and Lucy “were for a few seconds in very great danger”?
- ❖ Why do Susan and Lucy feel shame at Aslan’s death along with sadness and horror?
- ❖ Why is Lucy quicker to see the mice as possible friends?
- ❖ Why is it that Aslan seems “more like himself” (even dead) without the ties binding him down?
- ❖ Why is Aslan larger?
- ❖ Why is it important that Aslan is not a ghost?
- ❖ Why is it important that a willing innocent take the place of a traitor?
- ❖ Who does Death now work backwards for?
- ❖ Why does Aslan appear playful now?
- ❖ Why is Aslan compared to both a storm and a kitten?
- ❖ Compare Aslan telling the girls to ride on him to his request that they hold his mane in the last chapter.
- ❖ Why does Aslan first go to the White Witch’s home?





Written by The Rev. Trey Kennedy

Please use these discussion questions freely while giving credit to The Rev. Trey Kennedy

Check out <http://gospelaccordingtosuperheroes.weebly.com>

Contact The Rev. Trey Kennedy at fathertreykennedy@gmail.com

Gospel According to Superheroes Icon created by The Rev. Trey Kennedy
All characters mentioned are fictional and not owned/created by The Rev. Trey Kennedy

