



*The Gospel
according to
Superheroes*

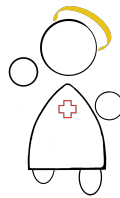
Book Discussion Group

Here are some questions to help get you started with your discussion.

The Magician's Nephew Chapter 4:

- ❖ What do you think it is about the world Polly and Digory find themselves in that causes Polly to respond, “I don’t like it”? Why does she feel this way? Should we have the same reaction as well?
- ❖ Polly shows herself to be loyal when she says, “I’ll go anywhere you go.” What makes her loyal to Digory? Is it because he came for her in the World Between the Worlds, or is it something more than that? What is the nature of friendship? Do you have a friend who reminds you of Polly or Digory?
- ❖ Polly points out that Digory, in his curiosity, looks just like his uncle. How is Digory’s curiosity leading him down a dark path? What might keep him from becoming like his uncle?
- ❖ We are told that the statues of the rulers of this kingdom appear crueler and crueler as time goes on. How is this like kings or emperors in our own world? What does this say about humanity? How can we follow a different pattern from this kingdom?
- ❖ What is it about the last statue that makes her appear beautiful even though she also appears fierce and prideful? Why is it that only Digory seems to see the beauty in her?





Written by The Rev. Trey Kennedy

Please use these discussion questions freely while giving credit to The Rev. Trey Kennedy

Check out <http://gospelaccordingtosuperheroes.weebly.com>

Contact The Rev. Trey Kennedy at fathertreykennedy@gmail.com

Gospel According to Superheroes Icon created by The Rev. Trey Kennedy
All characters mentioned are fictional and not owned/created by The Rev. Trey Kennedy

